

HOSHIZAKI

SAFETEMP™ Self-Contained Reach-In Freezers

Features: Cabinet Construction

- Stainless steel doors, front panel and interior floor, along with Anodized aluminum sides and interior for long life, durability and easy maintenance
- (3) heavy duty epoxy shelves per section are standard; Mounted on aluminum pilasters shelves are adjustable in 1" increments
- Cabinet door perimeter heater provides condensation control in high humidity environments and is equipped with a back-up heater should the primary heater fail; Manual power switch allows for energy savings in low humidity conditions
- Cabinet and doors are 2 3/8" thick, insulated with R-134a, CFC free foamed in place polyurethane
- Interior light automatically activated when doors are opened
- 4" Heavy duty casters

FH1-AAC(HD)
1 Section Freezer
FH2-AAC(HD)
2 Section Freezer



Door Construction

- Doors are constructed of high grade 300 Series stainless steel inside and out (HD: Two half doors per section)
- Flush mount door handles maximize aisle space by eliminating protruding parts
- Door hinges are all metal with tension spring closure and will not wear out like traditional cam-lift hinges; Doors stay open at 105° and are self-closing at 75°; Door hinge spring tension is adjustable
- Step door design protects door gasket when product is removed from the box; Snap-in magnetic door gaskets are durable and easily removed
- Door hinging is field reversible



Refrigeration System

- High efficiency refrigeration system is designed with a large capacity condenser and evaporator resulting in lower overall power consumption
- Refrigeration system is mounted on a fully insulated rotocast platform and is easily removable from the main unit
- Evaporator coil is coated for extended life
- Refrigeration system equipped with solid state controls to maintain optimum cabinet temperature
- Controls can be set to initiate heated defrost cycles every 3,4,8,12, or 24 hours as required
- Removable, cleanable air filter protects condenser and reduces cleaning requirements
- Hot gas condensate evaporator is standard with a condensate overflow tube to direct excess water away from top of cabinet under extreme conditions
- 115 volt units equipped with cord and plug
- Refrigerant: R-404A with expansion valve control



* The FH1-AAC and FH2-AAC refrigerators have earned the ENERGY STAR.



Reliability is a beautiful thing®

© HOSHIZAKI AMERICA, INC.

618 Hwy. 74 S., Peachtree City, GA30269

1-800-438-6087

FAX 1-800-345-1325

TEL 770-487-2331

www.hoshizaki.com



FH1-2-AAC(HD)

SAFETEMP REACH-IN FREEZERS

SAFETEMP™ FREEZERS



FH1-AAC(HD)
(1 SECTION FREEZER)

FH2-AAC(HD)
(2 SECTION FREEZER)

WARRANTY
TWOYEAR - Parts & Labor on entire machine
FIVEYEAR - Parts on: Compressor

Warranty valid in United States, Canada, Puerto Rico, & U.S. Territories. Contact Factory for Warranty in other Countries.

DIMENSIONS/CAPACITY

Model	One Section FH1-AAC(HD)	Two Section FH2-AAC(HD)
Interior Storage Capacity	22.3 ft ³	48.3 ft ³
Overall Width	27.5"	55"
Overall Depth	33.6"	33.6"
Height (including 4" casters)	82.5"	82.5"
Depth with Door open at 90°	58.5"	58.5"
Door Opening Width	21.75"	21.75"
Door Opening Height(Full Door)	59.25"	59.25"
Door Opening Height(Half Door)	26.75"	26.75"
Adjustable Shelves	3	6
Center Shelves	--	3
Shelf Dimensions	21 1/4"W X 26"d	21 1/4"W X 26"d
Crated Shipping Weight	395 lbs.	601 lbs.
Crated Height	85"	85"
Crated Width	32"	59"
Crated Depth	38"	38"

ELECTRICAL/REFRIGERATION

Model	One Section FH1-AAC(HD)	Two Section FH2-AAC(HD)
Voltage	115/60/1	115/60/1
Amperage	11.0	15.5
HACR Breaker	15.0	20.0
Electrical Connection(NEMA)	5-15P	5-15P
*Energy Consumption(kwh/day)	15.0	23.6
*Heat Rejection (BTU/Hr.)	2158	3355
Voltage Range	104 - 126	104 - 126
Approximate Nominal Compressor BTU/Hr.(HP)	2450 (2/3 hp)	3690 (1 hp)
Ambient Temp. Range	45° - 100°F	45° - 100°F
Control Setpoint Range	-10° - +28°F	-10° - +28°F
*Refrigerant	R-404A	R-404A

OPTIONS

- 6" Die-cast legs with stainless steel feet
- Patented Foot Pedal Door Opener
- Patented Combination Tray/Pan Slides
- Additional Epoxy Shelves
- Additional Epoxy Center Shelves
- Door Reversal Kit
- Stainless Steel Shelves
- Door Padlock Hasp

* Based on 100°F ambient cycling at set point

We reserve the right to change specifications without notice.

© HOSHIZAKI AMERICA, INC.

618 Hwy. 74 S., Peachtree City, GA30269

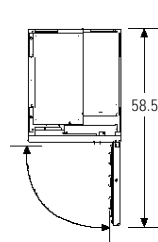
1-800-438-6087

FAX 1-800-345-1325

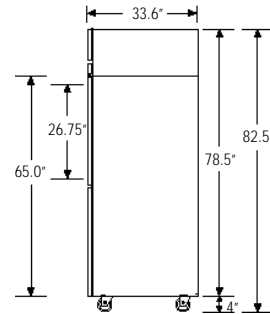
TEL 770-487-2331

www.hoshizaki.com

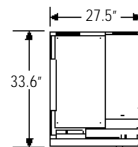
Printed in U.S.A.



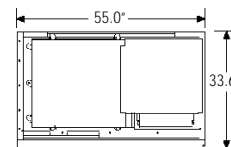
DOOR SWING(ALLUNITS)



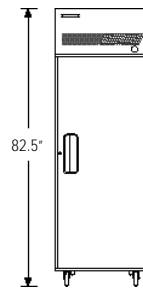
SIDE VIEW(ALLUNITS)



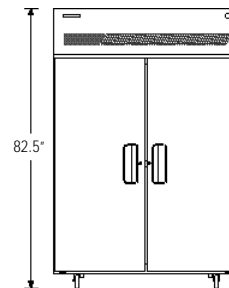
(PLAN VIEW)



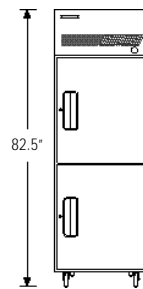
(PLAN VIEW)



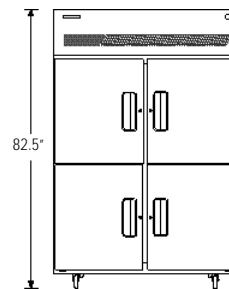
FH1-AAC



FH2-AAC



FH1-AAC-HD



FH2-AAC-HD