

MODEL# SB-1
CROWN VERITY SIDE BURNER
OPERATING AND INSTALLATION INSTRUCTIONS

REV. 01 / 02

RETAIN FOR FUTURE REFERENCE

PLEASE READ THE MCB OWNER'S MANUAL, REFERENCES ARE MADE TO IT. OBEY ALL SAFETY WARNINGS AND PROCEDURES.



Thank you for purchasing this quality product.
With proper use the SB-1 side burner will enhance the
outdoor cooking experience for many years.
Crown Verity inc. is proud of this product.
We hope you will enjoy using it.

FOR YOUR SAFETY

Do not store or use gasoline or other flammable vapors or liquids in the vicinity of this or any other appliance.

WARNING: Improper installation, adjustment, alteration, service or maintenance can cause property damage, injury or death. Read the installation, operating & maintenance instructions thoroughly before installing or servicing this equipment.



This appliance is for operation outdoors only
ANSI Z83.11A / CGA 1.8 - M 97



Installation

The SB-1 side burner is offered in both mobile and built-in versions.

The mobile unit, which attaches to the right side of all MCB charbroilers, is offered in L.P (propane) gas only. The built in version SB-1-BI is offered in both L.P. and Nat. gas. Installation must conform with local codes.

SB-1 (mobile) Installation

1. Remove the push handle from the right side of the grill by removing the two bolts from the inside of the grill as shown in fig.1. You must remove the grids and the front heat shield to access the front bolt.
2. Attach the side burner cabinet assembly to the grill using the nuts, bolts, and washers supplied as shown in fig.2.
3. Remove the regulator assembly from the end of the hose as shown in fig. 3. On larger units, choose the hose that is on the right (closest) side.
4. Install the brass "Tee" between the outlet of the regulator and the inlet of the hose as shown in fig. 4. Be sure to tighten the threads enough to prevent any gas leaks. Do not over-tighten the fitting into the regulator as it may crack the regulator casing.
5. Attach the side burner hose with the use of two wrenches as shown in fig. 5.
6. Make sure the hoses do not come into contact with any hot surfaces, and are routed outside of the rear leg(s). Adjust the orientation of the "Tee" and the regulator as necessary. See fig.6.
7. Install the grate and protective cover.
8. Finally, before operating the side burner, perform a leak check by brushing on a soap and water solution at every joint and watch for growing bubbles that indicate a leak. Once you are confident there are no leaks, you may operate your new Crown Verity side burner.

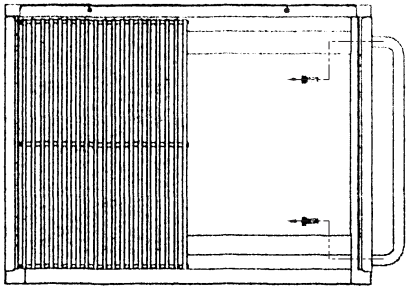


FIG. 1

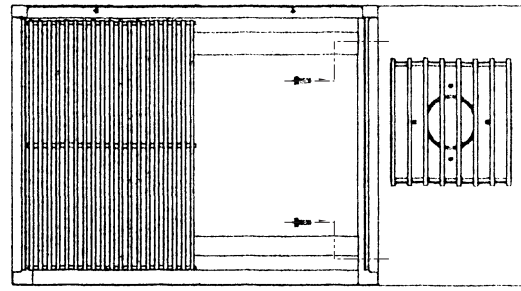


FIG. 2

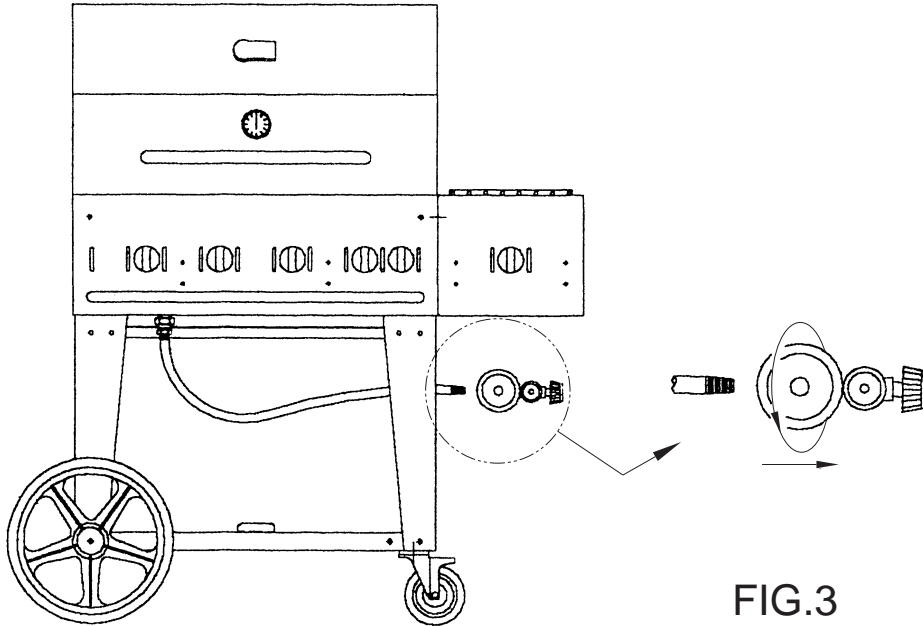


FIG. 3

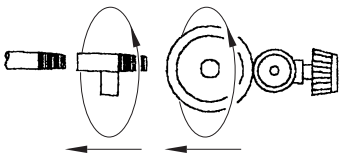


FIG. 4

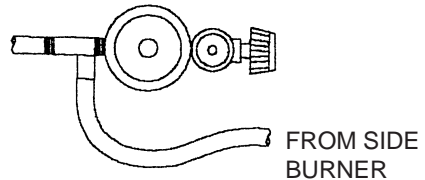
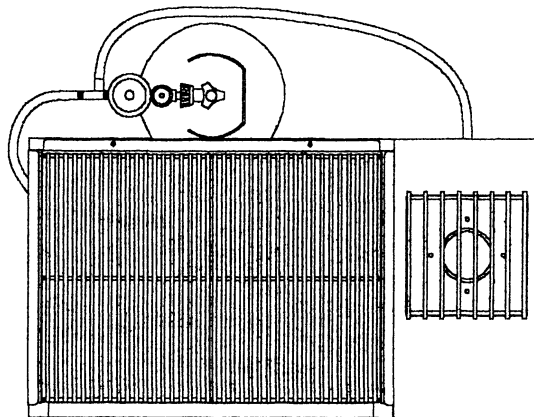


FIG. 5

FIG. 6



SB-1-BI (built in) Installation

The built-in version, which is offered in both L.P. and Nat. gas, is not supplied with a hose, or a regulator. Regulators are supplied with all MCB-BI units. As installations do vary in built-in applications, a qualified gas technician should perform the connection of a gas supply line. Installation must conform with local codes. Do not permanently fasten the SB-1-BI unit into its opening, the unit may need to be removed for servicing. Access to service points are gained from the bottom of the unit. Make access possible when building the support structure. Maintain clearances to combustibles as outlined below.

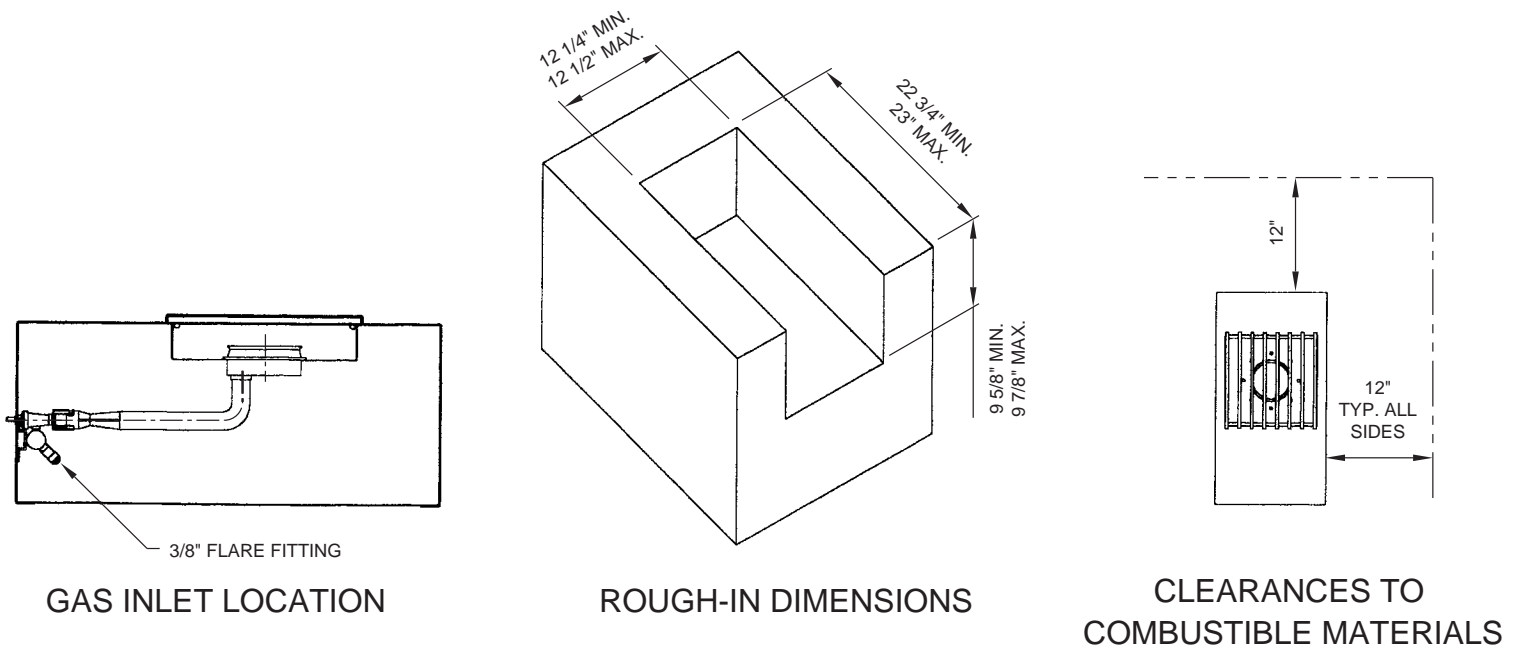
The gas supply inlet is located at the bottom of the manifold, inside the front of the side burner cabinet. It is pre-fitted with a 3/8" - 45 degree flare fitting and is ready to receive 3/8" flared copper tubing.

The supply pressure must be regulated according to the pressures indicated on the rating plate. The regulators that are supplied with all MCB-BI units are compatible with SB-1-BI side burners and should be used. A "Tee" should be installed downstream of the regulator and copper tubing can then be used to connect the side burner.

It is very important that the side burner be connected to the correct type of gas and is regulated at the correct pressure. The rating plate on all SB-1 units contains this and other important information and must be observed.

Once connection to a supply line has been made, perform a leak check as outlined in step 8 on pg. 2. Only then can you proceed to operate your side burner.

See diagrams below for gas inlet location, rough-in dimensions and clearances to combustible materials. Note: minimum spacing between MCB's and side burners in any configuration is 0".



Operation

Operating your SB-1 side burner is relatively simple. Once you have properly installed the unit and performed a leak test, you may proceed.

START-UP

1. Remove the protective cover while lighting.
2. Push and turn the burner valve counter-clockwise to the low setting and light the burner through the grate with a book match or lighter.
3. Adjust the flame setting as desired while cooking.

SHUT-DOWN

1. Turn the burner valve to the OFF Position and replace the protective cover.
2. Shut off the gas supply valve when you are finished cooking. Do not leave any gas supply valve open while your MCB grill or side-burner is not in use

Keep the area around the side-burner and MCB grill free of combustible materials such as grass, leaves, paper, gasoline and other flammable liquids or materials.

Do not obstruct the flow of air around the burner, vent holes on the front of the unit, or the openings in the corners of the recessed area and around the burner.

IF YOU SMELL GAS: Shut off all burners and pilots on all appliances. Shut off and disconnect all gas supply valves and hoses. Do not operate the appliance(s) until the problem is repaired. If the problem persists, immediately consult your gas supplier. Keep the area free of any and all sources of ignition.

Instructions to be used in the event the user smells gas should be posted in a prominent location. This information can be obtained from your local gas supplier.

Maintenance and Cleaning

Very little maintenance is required to keep your SB-1 side burner in top operating condition. Periodic cleaning should be done to the cabinet, grate and the burner head. The burner can be removed by loosening the small nut under the burner head and removing the retainer bracket.

Warnings regarding insects and other burner obstructions are explained in the MCB owner's manual. Please refer to those noted for detailed cleaning and maintenance procedures.

A leak test should be performed at least once a year. Procedures for leak testing are outlined in the installation of this and the MCB manuals. Do not operate your grill OR side burner if there is evidence of a gas leak. The equipment must be repaired before you can resume use.

Always make sure that the burner is properly positioned on the valve / orifice assembly. Detailed instructions and a diagram are found in the MCB manual.

Always inspect the hoses before each use for evidence of cracks or other damage. Repair / replace damaged hoses or other components before use.



**CROWN
VERITY
INC**

CROWN VERITY INC., 37 ADAMS BLVD., BRANTFORD, ON. CAN. N3S 7V8
TEL: (519) 751-1800 FAX: (519) 751-1802
www.crownverity.com
Email: info@crowverity.com