



**T&S BRASS AND BRONZE WORKS, INC.**  
 2 Saddleback Cove / P.O. Box 1088  
 Travelers Rest, SC 29690

Model No.  
**B-0231-CR**

Item No.

Travelers Rest, SC: 800-476-4103 • Simi Valley, CA: 800-423-0150 • Fax: 864-834-3518 • www.tsbrass.com



**ADA Compliant**

This Space for Architect/Engineer Approval

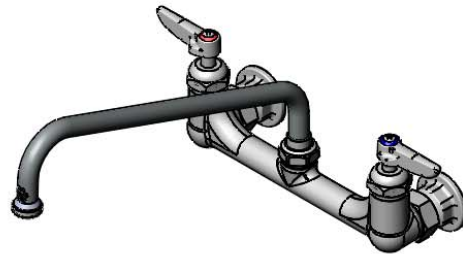
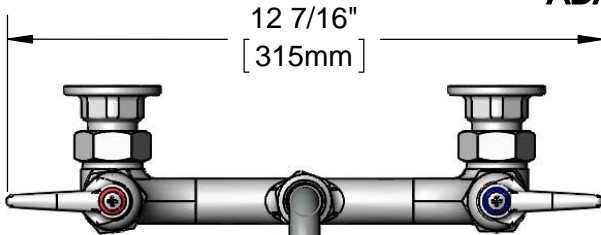
Job Name \_\_\_\_\_ Date \_\_\_\_\_

Model Specified \_\_\_\_\_ Quantity \_\_\_\_\_

Customer/Wholesaler \_\_\_\_\_

Contractor \_\_\_\_\_

Architect/Engineer \_\_\_\_\_



Cerama Cartridges  
& Lever Handles w/  
Color Coded Indexes

2 3/8"  
[61mm]

12"  
[305mm]

062X  
12" Swing Nozzle w/  
Stream Regulator  
Outlet

Swivel Joint

3 5/8"  
[92mm]

7 1/2"  
[191mm]

4 3/4"  
[121mm]

Mounting Surface

8"  
[203mm]  
Adjustable from  
7 3/4" to 8 1/4"  
[197mm to 210mm]

Ø 2" [51mm]  
Flanges w/  
1/2" NPT  
Female Inlets

Product Specifications:

8" Wall Mount Mixing Faucet, Cerama Cartridges, Lever Handles,  
12" Swing Nozzle & 1/2" NPT Female Inlets

Product Compliance:

ASME A112.18.1 / CSA B125.1  
 NSF 61 - Section 9  
 NSF 372 (Low Lead Content)  
 ANSI A117.1 (ADA)



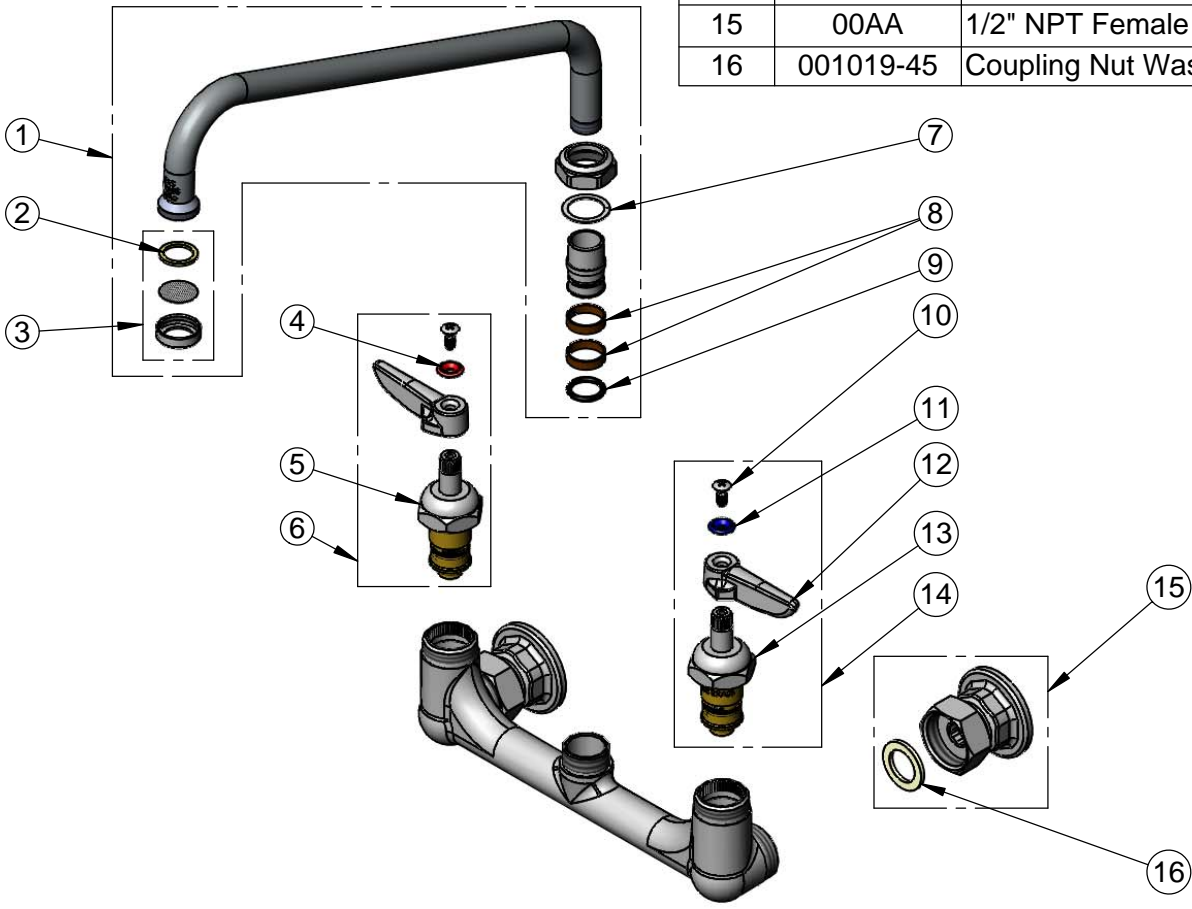
**T&S BRASS AND BRONZE WORKS, INC.**  
 2 Saddleback Cove / P.O. Box 1088  
 Travelers Rest, SC 29690

Model No.  
**B-0231-CR**

Item No.

Travelers Rest, SC: 800-476-4103 • Simi Valley, CA: 800-423-0150 • Fax: 864-834-3518 • www.tsbrass.com

ITEM NO.	SALES NO.	DESCRIPTION
1	062X	12" Swing Nozzle
2	B-PT	Stream Regulator Outlet
3	001048-45	Nozzle Tip Washer
4	001661-45	Red Index-HW
5	011278-25	Cerama Cartridge, RTC
6	012444-25	Cerama Cartridge, RTC w/ Handle, Index & Screw
7	009538-45	Swivel Washer
8	011429-45	Swivel Sleeves (2)
9	001074-45	O-Ring
10	000922-45	Lever Handle Screw
11	001660-45	Blue Index-CW
12	001638-45	Lever Handle
13	011279-25	Cerama Cartridge, LTC
14	012445-25	Cerama Cartridge, RTC w/ Handle, Index & Screw
15	00AA	1/2" NPT Female Eccentric Flange
16	001019-45	Coupling Nut Washer



Product Specifications:  
 8" Wall Mount Mixing Faucet, Cerama Cartridges, Lever Handles,  
 12" Swing Nozzle & 1/2" NPT Female Inlets

Product Compliance:  
 ASME A112.18.1 / CSA B125.1  
 NSF 61 - Section 9  
 NSF 372 (Low Lead Content)  
 ANSI A117.1 (ADA)